

charnwood

Woodworking machinery at its best!

FINE FILTER EXTRACTOR OWNERS MANUAL MODEL: DC50-AUTO



CE

Charnwood, Cedar Court, Walker Road,
Hilltop Industrial Estate, Bardon Hill, Leicestershire, LE67 1TU

Tel. 01530 516 926 Fax. 01530 516 929
email: sales@charnwood.net website: www.charnwood.net



WARNING: Do not attempt to operate the machine until you have read thoroughly and understood completely all instructions, rules, etc. contained in this manual. Failure to comply may result in accidents involving fire, electric shock, or serious personal injury. Keep this owner's manual and review frequently for continuous safe operation.

Technical data

Voltage/frequency	220-240v ~ 50 Hz
Motor (Carbon Brush)	1100 watts
Flowrate	3.05m ³ /min (53l/sec)
Drum capacity	50L
Inlet diameter	100mm
Maximum power tool	2200 watts
Net Weight	10kg
Rating	Hobby

Main components



Safety Rules



Wear Eye Protection



Wear Ear Protection

As with all machines, there is a certain amount of hazard involved with the use of this dust extractor. Use the machine with the respect and caution demanded where safety precautions are concerned. When normal safety precautions are overlooked or ignored personal injury to the operator can result.

Read, understand and follow the safety and operating instructions found in this manual. Know the limitations and hazards associated with this dust extractor.

Electrical Earthing

Make certain that the machine frame is electrically earthed and that an earth lead is included in the incoming electrical service.

Eye Safety

Wear an approved safety shield, goggles or glasses to protect eyes. (NOTE: Standard eye glasses are not safety glasses).

Personal Protection

Before operating the machine, remove tie, rings, watch and other jewellery and roll up sleeves above the elbows. Remove all loose outer clothing and confine long hair. Protective type footwear should be used. Do not wear gloves.

Guards

Keep the machine guards in place for every operation for which they can be used. If any guards are removed for maintenance, DO NOT OPERATE the machine until the guards are re-installed.

Work Area

Keep the floor around the machine clean and free of scrap material, saw dust, oil and other liquids to minimize the danger of tripping or slipping. Make certain the work area is well lit. Provide adequate work space around the machine.

Operator Position

Maintain a balanced stance and keep your body under control at all times.

Housekeeping

Before turning on machine, remove all extra equipment such as keys, wrenches, scrap and cleaning rags away from the working area.

Careless Acts

Give the work you are doing your undivided attention. Looking around, carrying on a conversation and "horseplay" are careless acts that can result in serious injury. Disconnect machine before performing any service or maintenance.

Hand Safety

Keep hands clear of the motor area. Do not reach down the hose to clear parts or scrap with the motor running. Avoid awkward operations and hand positions where a sudden slip could cause your hand to contact the blade.

Adjustments

Make all adjustments to the machine and operational setup with the power off.

Job Completion

If the operator leaves the machine area for any reason, he should turn off the power supply to the dust extractor.

Drugs, Alcohol, Medication

Do not operate this machine while under the influence of drugs, alcohol, or any medication.

Health Hazards

Some dust created by power sanding, sawing, grinding, drilling and other construction activities contains chemicals known to cause cancer, birth defects or other reproductive harm. Some examples of these chemicals are:

- * Lead from lead-based paint.
- * Crystalline silica from bricks and cement and other masonry products.
- * Arsenic and chromium from chemically-treated lumber.

Your risk from these exposures varies, depending on how often you do this type of work. To reduce your exposure to these chemicals, work in a well-ventilated area and work with approved safety equipment, such as those dust masks that are specifically designed to filter out microscopic particles.

Use Proper Extension Cord

Make sure your extension cord is in good condition. When using an extension cord be sure to use one heavy enough to carry the current your product will draw. An undersized cord will cause a drop in line voltage resulting in loss of power and overheating. If in doubt, use the next heavier cable size.

General Safety Procedures for Dust Extractors

This machine has been built exclusively for woodworking. Do not alter the design of the machine or use it for purposes not intended by the manufacturer. The manufacturer is not liable for damage or injury, which results from incorrect assembly, operation or electrical connections. This machine must be operated under strict safety regulations. This is the only way to reduce the risk of accidents.

Location


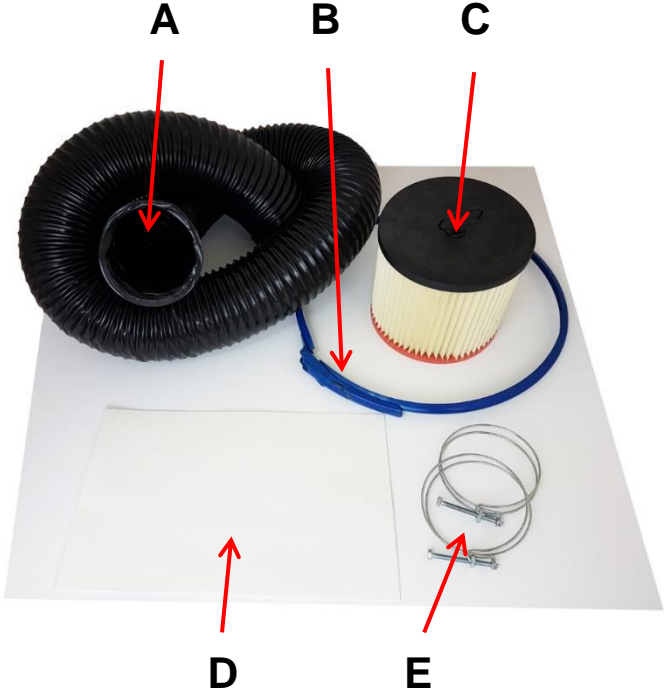
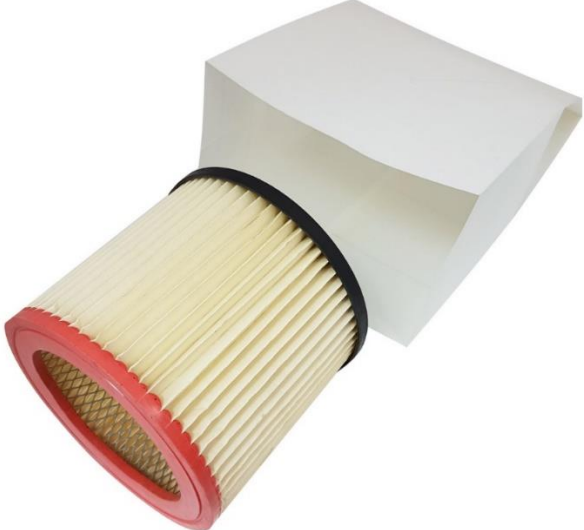
Be sure to switch on the machine and the exhaust unit simultaneously. The main cable plug must be connected as appropriate for the electrical installation and must have an earth lead (or a directly earth conductor for 240 V). It is advisable to have a qualified electrical connection. Appropriate lighting must be provided in the work area.

The Operator

Read the operating manual carefully to prevent machine accidents. Never work while under the influence of drugs, alcohol or medications. Wear tight-fitting work clothes, safety goggles and safety shoes and tie back long hair. Remove rings, wrist watches and bracelets before working. Ear protection is recommended. Never climb onto the machine table - the machine may fall over and cause injuries.

Keep children and visitors out of the work area.

Assembly Instructions

	<p>For packaging reasons this machine is not entirely assembled.</p> <p>Remove the extractor from the carton, remove the lid and motor unit to access the items stored inside the drum.</p>
 <p>A B C</p> <p>D E</p>	<p>Inside the drum you will find the following components:</p> <ul style="list-style-type: none">A – 100mm HoseB – Locking StrapC – Filter CartridgeD – Filter BagE – 100mm Hose Clamp
	<p>Place the Filter Cartridge (A) inside a Filter Bag (B)</p>



Fold any overhanging bag into the inside of the filter.



Push the filter cartridge onto the motor casing, trapping the filter bag in position.



Place the complete motor casing, lid and filter back onto the collector drum and secure in place with the locking strap.

Connect the hose using the 100mm hose clip and tighten with a 10mm spanner or socket.

Your Dust Extractor is now ready for use.

Operating The Extractor



The Extractor is fitted with a power socket to allow automatic switching when operating the power tool.

Plug your power tool into the socket.

Please Note:
Maximum 2200 watts.



The Switch has 3 positions:

On / Off / Auto

The dust extractor can be operated manually by moving the switch between the Off and On positions.

When Auto is selected, the extractor will start when it detects the power draw from the power tool.

When the power tool is switched off the extractor will continue to run for a few seconds to clear the dust from the hose, before stopping.

Optional Accessories

There are a large range of accessories available to connect the extractor to various types of machines which have dust outlets of different sizes.



Reducers are available which step down from the 100mm diameter hose to allow connections to bench top machine with smaller sizes.



When using the extractor with portable power tools, it is more convenient to fit a reducer and then a length of smaller diameter hose, normally 40mm or 50mm diameter, which will attach to the power tool without interfering with its operation.

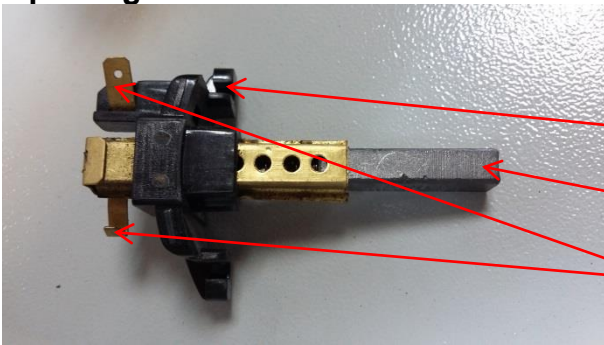
Maintenance

Before any type of maintenance is carried out, the extractor should be disconnected from the power supply.

Emptying the drum: The drum should be emptied when it is around 2/3rds full. If performance of the extractor deteriorates, it may be because the drum is too full. Wait for a few seconds for dust to settle, then undo the lid locking strap. Removing the hose may make the task easier. Empty the drum into a suitable container or bag.

Replacing the filters: The extractor has a 2 stage filter. The cartridge filter will generally last for many years but will eventually need replacing if it becomes damaged or clogged. The filter bag has a much shorter life and should be inspected every month. Replace it if it is worn or damaged.

Replacing the motor brushes:

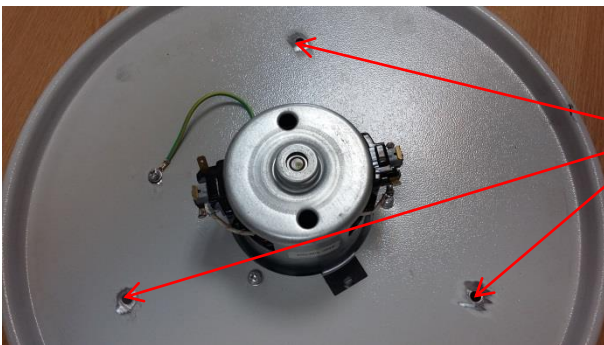


After some time the carbon brushes inside the motor may need replacing.

Brush Holder

Carbon Brush

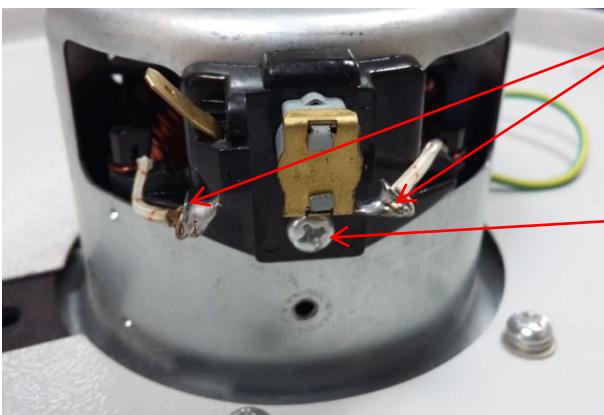
Connection point



Disconnect from the power supply, remove the lid and remove the filters.

Remove 3 screws which hold the motor bracket to the lid.

Disconnect the 2 yellow/green earth wires and the 2 black power feed wires.



The 2 remaining copper wire connections to the brush are clamped in place by a folded tang. Unfold the tang to release the wires.

Undo the brush holder screw and remove the brush holder.

Follow the procedure in reverse to fit the new brush. Making sure to re-fold the 2 tangs ensuring a good connection.


Declaration of Conformity for CE Marking

Charnwood Declare that Suction Cleaning Device, Model DC50AUTO

Conforms with the following Directives: Machinery Directive 2006/42/EC

And further conforms to the machinery example for which the EC type examination Certificate No. 50074570 has been issued by TUV Rheinland LGA Products GmbH, Tillystrasse 2, 90431 Nurnberg, Germany.

I hereby declare that equipment named above has been tested and found to comply with the relevant sections of the above referenced specifications. The machinery complies with all essential requirements of the directive.

Signed:  : 03/11/2017 Location: Leicestershire

Richard Cook, Director



Please dispose of packaging for the product in a responsible manner. It is suitable for recycling. Help to protect the environment, take the packaging to the local amenity tip and place into the appropriate recycling bin.

Only for EU countries



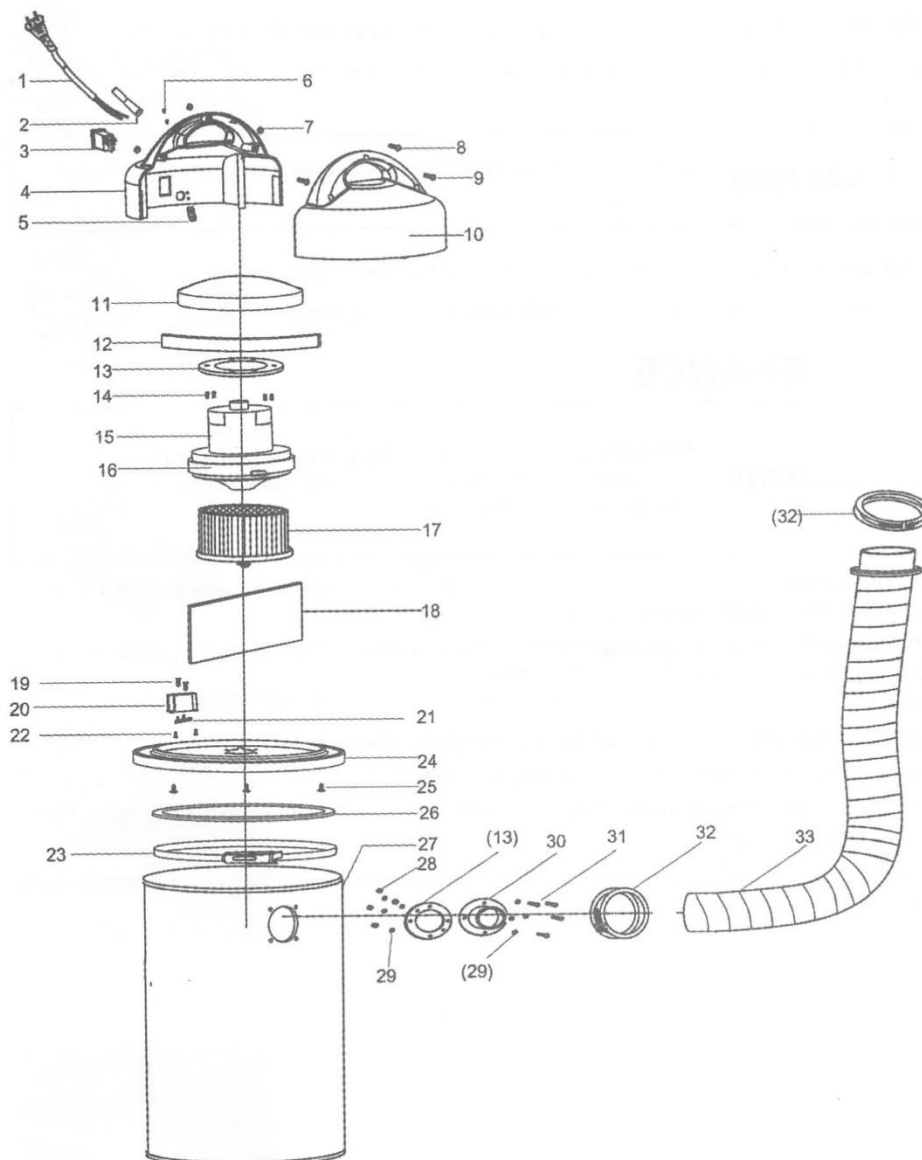
Do not dispose of electric tools together with household waste material!

In observance of European Directive 2002/96/EC on waste electrical and electronic equipment (EEE) and its implementation in accordance with national law, electric tools that have reached the end of their life must be collected separately and returned to an environmentally compatible recycling facility.

Your local refuse amenity will have a separate collection area for EEE goods

Charnwood DC50-AUTO Parts List

Part No.	Description	Part No.	Description
01	Power Cord and Plug	02	Cord Sleeve
03	On/Off Switch	04	Left Motor Cover
05	Strain Relief Plate	06	Philips Screw M4 x 10
07	Lock Nut M5	08	Philips Screw M5 x 25
09	Philips Screw M5 x 45	10	Left Motor Cover
11	Round Foam Piece	12	Long Foam Piece
13	Rubber Washer	14	Philips Screw M5 x 8
15	Motor 1100w/240v/50hz	16	Rubber Seal
17	Filter Cartridge	18	Filter Bag
19	Philips Screw T4.2 x 9.5	20	Transformer Box
21	EMC Component	22	Philips Screw T2.9 x 6.5
23	Lid Locking Strap	24	Drum Lid
25	Philips Screw ST5.5 x 18	26	Seal Gasket
27	Drum	28	Lock Nut M6
29	Flat Washer M6	30	Hose Inlet
31	Philips Screw M6 x 15	32	Hose Clamp 100mm
33	Extraction Hose 100mm Dia.	BRUSH	Pair of Carbon Brushes





Woodworking machinery at its best!

Last Updated: May 2020

**Charnwood, Cedar Court, Walker Road,
Hilltop Industrial Estate, Bardon Hill, Leicestershire, LE67 1TU
Tel. 01530 516 926 Fax. 01530 516 929
email: sales@charnwood.net website: www.charnwood.net**