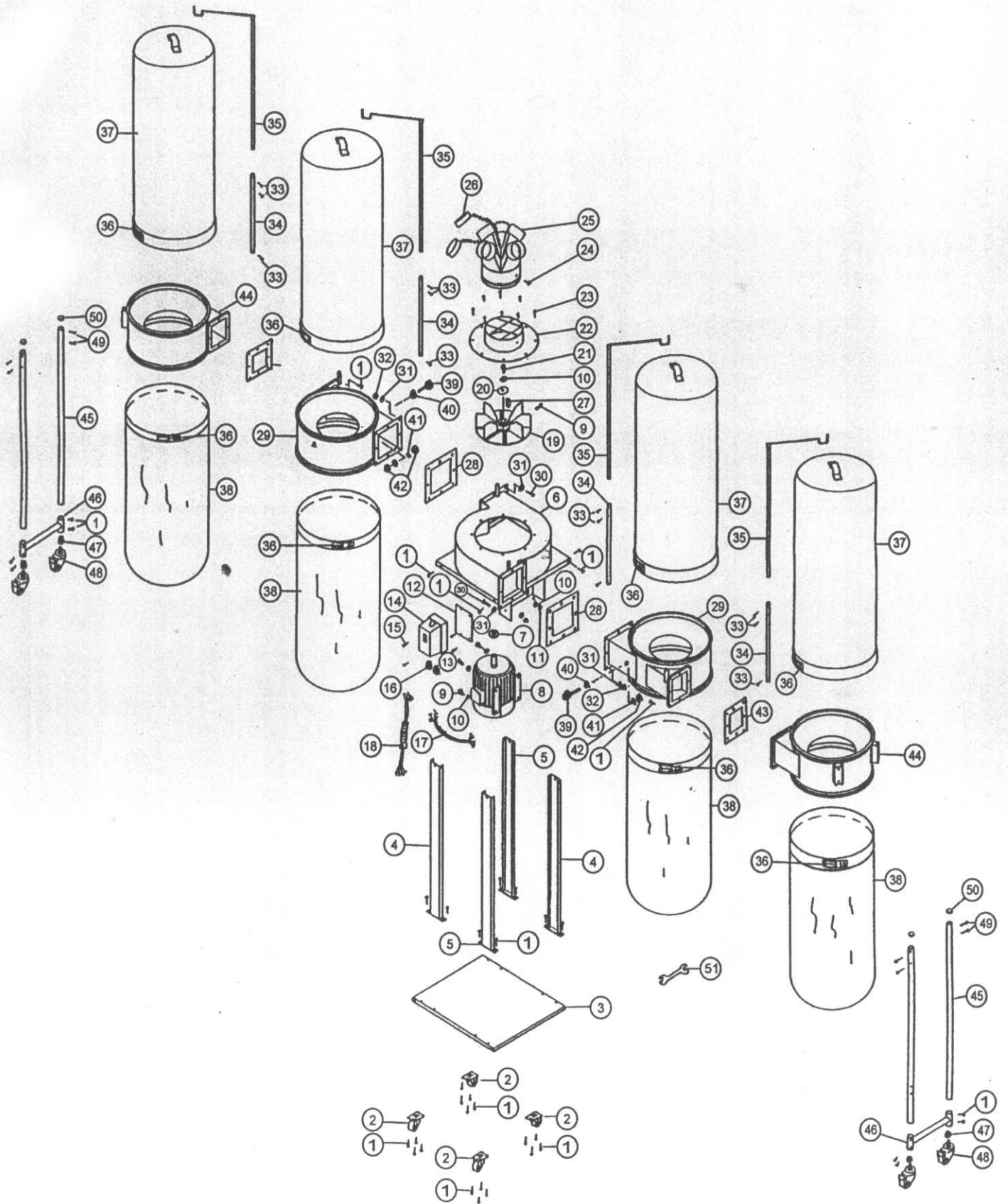


EXPLODED DIAGRAM



W799 Parts List

NO.	Description	Specification	Q'TY
1	Phillips Head Screw with Flange	5/16"x1/2"	56
2	Wheel		4
3	Base		1
4	Right Support Leg		2
5	Left Support Leg		2
6	Main Housing		1
7	Motor Packing		1
8	Motor		1
9	Hex Head Bolt	3/8"x 1-1/4"	5
10	Washer	3/8"x 23	9
11	Nut	3/8"	4
12	Switch Plate		1
13	Phillips Head Screw	3/8"x 1/2"	2
14	Switch		1
15	Phillips Head Screw	3/16"x 3/4"	2
16	Wire Connector	PG25	3
17	Motor Wire		1
18	Power Wire		1
19	Impeller		1
20	Big Washer		1
21	Hex Head Bolt	3/8"x 3/4"	1
22	Housing Cover		1
23	Flange Bolt	5/16"x 3/4"	8
24	Phillips Head Screw with Flange	3/16"x 3/8"	1
25	5 Way Inlet		1
26	Cap		1
27	Key	12 x 10 x 50	1
28	Packing		2
29	Front Collector		2
30	Hex Head Bolt	5/16"x 1"	16
31	washer	5/16"x 23	32
32	Nut	5/16"	16
33	Flange Bolt	1/4"x 1/2"	12
34	Lower Bag Support	9	4
35	Upper Bag Support		4

NO.	Description	Specification	Q'TY
36	Belt Clamp		8
37	Upper bag		4
38	Lower Bag		4
39	Adjustable Screw		2
40	Nut	1/4"	2
41	Washer	1/4"	4
42	Lock nut	1/4"	2
43	Packing		2
44	Rear Collector		2
45	Supporting leg		4
46	Supporting Leg Bracket		2
47	Nut	1/2"	4
48	Movable Wheel	1/2"x3/4"	4
49	Cap Screw	1/4"x1 1/4"	8
50	Cap	1 1/4"	4
51	Open-end Wrench	10x12	1