
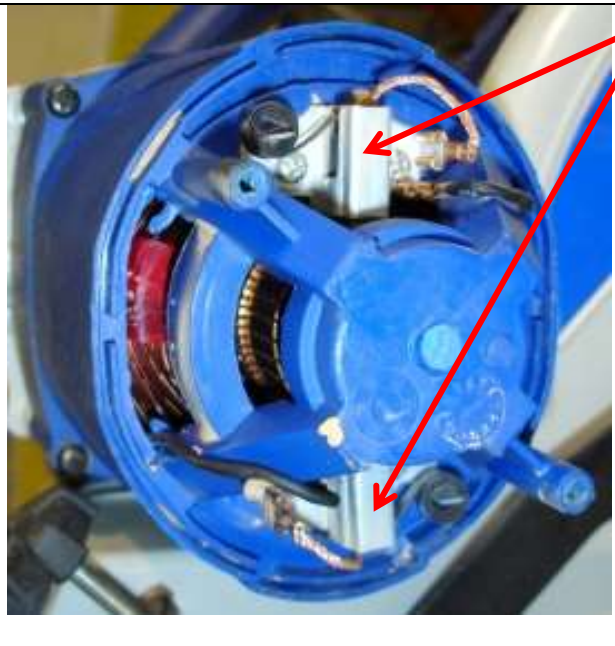
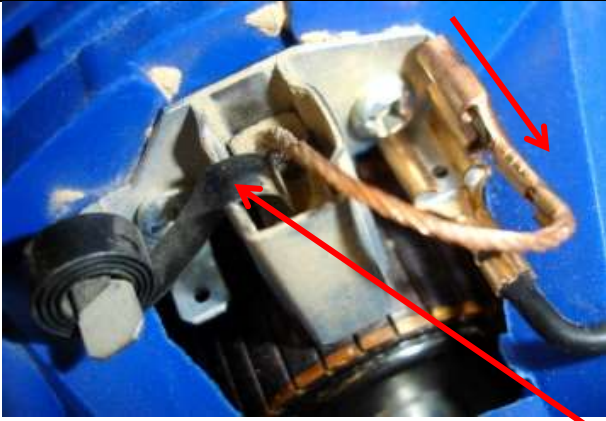


305DB Mitre Saw Inspection and Replacement of Carbon Brushes

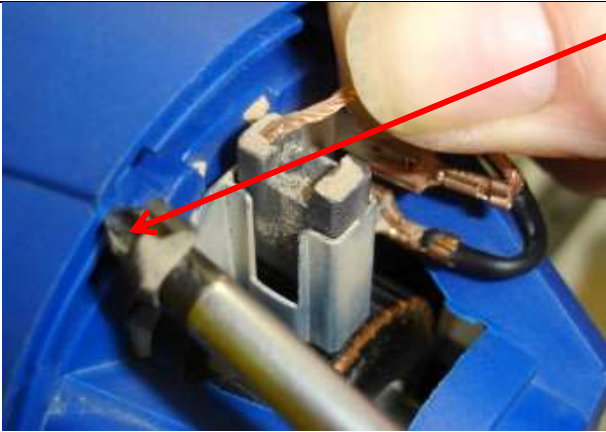
The life of the brushes is variable. It depends on the workload of the motor. Check them after 50 hours of use if the tool is new or new brushes have been installed. After the first check, inspect the brushes every 10 hours until they are replaced.

The brush holders are located inside the motor housing. Replace both brushes if the black carbon block is worn to less than 5mm in length, or if a feed wire is burnt or damaged. If the brushes are in good condition put them back in the same position they were removed from. A new carbon brush is around 19mm in length.

| | |
|---|--|
|  | <p>Ensure the Machine is disconnected from the power supply.</p> <p>Use a screwdriver to remove the two retaining screws from the end cover of the motor.</p> <p>Remove the cover.</p> |
|  | <p>There are 2 brushes on the motor.</p> |



Pull the spade terminal to disconnect the brush power supply lead.



Use the shaft of a small screwdriver to lift the end of the coil spring which holds the brush in place.

Remove the brush, inspect it and replace if necessary.

(If the brush does not require replacement, refit the brush in the same position it came from)



A new carbon brush is around 19mm in length. They are available from Charnwood as a pair.

After replacing the brush, ensure that the retaining spring is correctly positioned applying pressure to the end of the brush.

Ensure that the braided wire is not trapped and the spade terminal is fully connected making a good contact.

Replace the motor cover and run the motor for a minute if new brushes have been fitted. It is normal for the motor to spark slightly as they are bedding in.

**Charnwood, Cedar Court, Walker Road,
Hilltop Industrial Estate, Bardon Hill, Leicestershire, LE67 1TU**

Tel. 01530 516 926 Fax. 01530 516 929
email: sales@charnwood.net website: www.charnwood.net