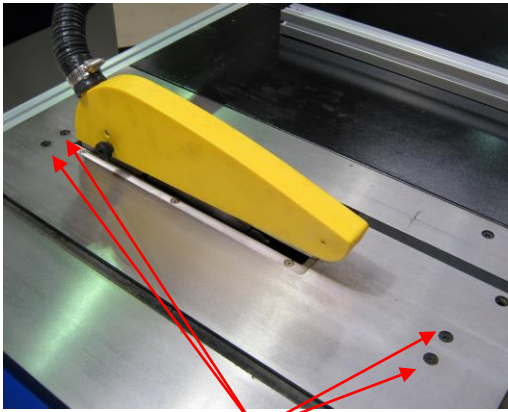




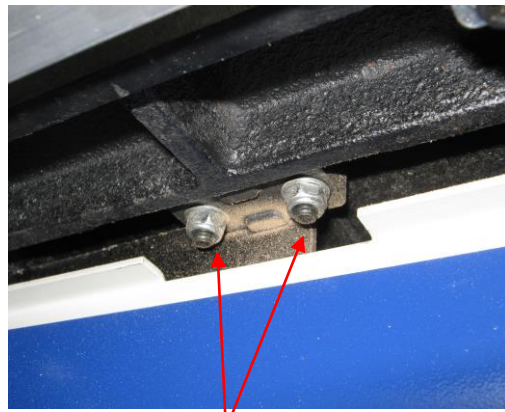
Woodworking machinery at its best!

W619 & W629 Table Saw Blade Alignment Instructions

- 1) Disconnect the saw from the power supply and remove the two blue side panels from the main body.
- 2) With a 4mm hex key loosen, but do not fully undo, the four Allen bolts located in the main cast iron table located just in front and behind the saw blade. There are four corresponding 10mm Nyloc nuts underneath the table.

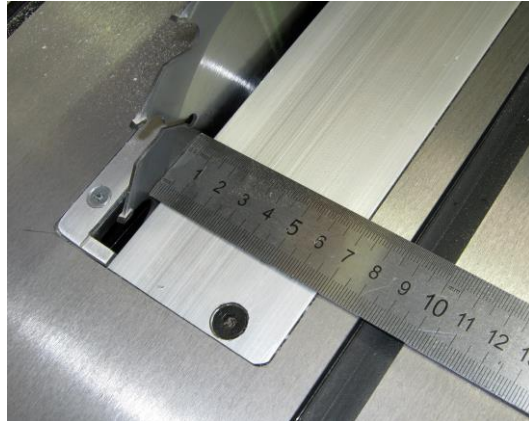
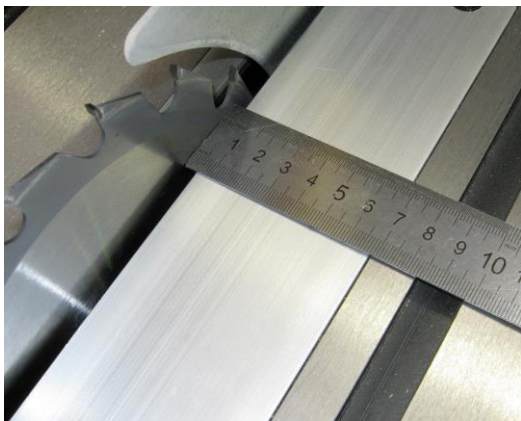


Allen Bolts



Nyloc Nuts

- 3) By holding the motor it is then possible to adjust the alignment of the sawblade in the table slot.
- 4) Measure the distance between the blade and the T slot in the table at both the front and rear of the blade, ensuring that both measurements are the same. Also, ensure that the blade will clear the table and insert when fully tilted.



- 5) When you are satisfied the blade is aligned, re-tighten the Allen bolts and replace the side panels prior to use.

Tel. 01530 516926 Fax. 01530 516929 email; sales@charnwood.net

Website: www.charnwood.net

Charnwood, Cedar Court, Walker Road, Bardon, Leicestershire, LE67 1TU, England