



Equipment and supplies for Picture Framing and Graphic Presentation

Cedar Ct, Walker Rd, Bardon Hill, Leics, LE67 1TU, Tel: 01530 516925 Fax: 01530 516 929
e-mail: sales@framerscorner.co.uk website: www.framerscorner.co.uk

M3 Underpinner Instructions for changing Rebate Clamp Cable

1. Remove 2 x M5 Socket Cap Head screws (15) holding Clamp Support Arm (12)
2. Remove 2 x M6 Socket Cap Head screws (79) holding Clamp Cast (62) to the fence. Drop Clamp Cast down through the machine.
3. Remove Guide Bar (61) and carefully remove Clamp Block Spring (82). This will release the Clamp Block (81) which will then allow the Inner Cable to be removed from the Clamp Block.
4. Undo M6 nut (2) on the bottom of the cable where the cable passes through the Clamp Footpedal (33)
5. Remove M8 nut on the bottom of the Cable Adjuster (3) where the cable passes through the bracket on the Floorstand (1).
6. Remove Inner and Outer Cable from Floorstand.
7. Fit the new cable, fitting the Inner Cable into the Clamp Block (81), assembling the Clamp Block (81), Clamp Block Spring (82), Guide Bar (61), Clamp Cast (62), fit the Outer Cable to the Inner Cable and attach the inner cable to the Floorstand.
8. Once the cable is replaced, the amount of movement of the Clamp Block (81) must be checked. When the footpedal is fully depressed, the Clamp Block (61) should move between around 20 mm.
9. The amount of movement can be adjusted by the M6 (top) & M8 (bottom) nuts on the Cable Adjuster (3).

The Operating Manual, showing the parts mentioned above, can be downloaded from our website www.framerscorner.co.uk

M3 Parts List No.1 - General Layout

Part No.	Part Code	Part Description
1	UP1124	Floorstand
2	F1016	2 x M8 Nut
3	UP1451	Cable Adjuster
4	F1009	M6 Adjustable Handle
5	UP1141	Footpedal Height Adjusting Bracket
6	F1016	4 x M8 Nuts
7	F1017	8 x M8 Washers
8	UP1125	Main Body
9	F1010	4 x M8 Hex Head Bolts
10	UP1132	8 x M5 Countersunks Screws
11	UP1128	LH and RH Top Plates
12	UP1134	Clamp Support Arm
13	UP1452	Cable and Outer Casing
14	See Page 8	Horizontal Clamp Assembly
15	F1006/7	2 x M5 Screws and Washers
16	F1010	4 x M6 Washers
17	F1011	4 x M6 Screws
18	UP1140	Right Hand Extension Table
19	-	Now part of UP1139/40
20	-	Now part of UP1139/40
21	-	Now part of UP1139/40
22	UP1139	Left Hand Extension Table
23	UP1109	Long Link
24	F1018	2 x M8 Screws
25	UP1111	Foot Pedal Pivot/Spring Bar
26	UP1466	Foot Pedal Spring
27	UP1126	Bottom Spring Bracket
28	F1012	M6 Grub Screw
29	UP1117	Collar
30	UP1110	Foot Pedal Long link Bar
31	UP1100	Footpedal
32	F1051	2 x Circlip
33	UP1133	Clamp Footpedal
34	UP1137	Cable Clamp
35	F1011	M6 Screw
36	F1006	M5 Screw

M3 Parts List No.2 - Operating Head

Part No.	Part Code	Part Description
37	F1020	M8 Socket Head Screw
38	F1022	2 x M10 Socket Head Screws
39	UP1114	2 x Trunnion Bar
40	F1013	4 x M6 Socket Head Screws
41	UP900	Left Hand Fence Block
42	UP1121	Fence Stop Bar
43	UP1116	Fence Collar
44	UP901	Right Hand Fence Block
45	UP1120	2 x Fence Bar
46	F1013	M6 Socket Head Screw
47	UP1132	Right Hand TopPlate
48	F1005	6 x M5 Countersunk Screws
49	F1021	2 x M8 Countersunk Screws
50	UP1107	Light Switch Bracket
51	UP1453	Light Switch
52	F1025	2 x M5 Cap Head Screws
53	F1019	M8 Hex Head Bolt
54	F1017	2 x M8 Washer
55	F1023	2 x M12 Washers
56	F1024	2 x M12 Socket Cap Head Screws
57	UP1103	Bottom Cross Bar
58	UP1105	2 x Pusher Connecting links
59	UP1113	Fulcrum Lever
60	F1019	2 x M8 Hex Head Screws
61	UP1136	Guide Bar
62	UP1127A	Clamp Cast
63	F1015	2 x M6 Nuts
64	F1010	2 x M6 Washers
65	F1003	M4 Grubscrew
66	UP1102	Driver Push Plate
67	-	Not used. Replaced by 2 x M5 Hex Head Bolts
68	UP1106	Driver Holder
69	UP1104	2 x Pusher Guide Rod
70	UP957	Driver Support
71	UP899	Fence Bracket
72	F1004	2 x M5 Grubscrew
73	F1008	6 x M5 Hex Head Screws
74	UP806	Bearing Housing
75	UP640	Round Pad Base
76	UP1119	Vertical Pressure Bar Long
77	UP1123	Top Pressure Bridge
78	UP1132	Left Hand Top Plate
79	F1013	2 x M6 Socket Cap Head Screws
80	UP496	2 x Fence Knob
81	UP1131	Clamp Block
82	UP1456	Clamp Block Spring
83	F1014	2 x M6 Countersunk Screws

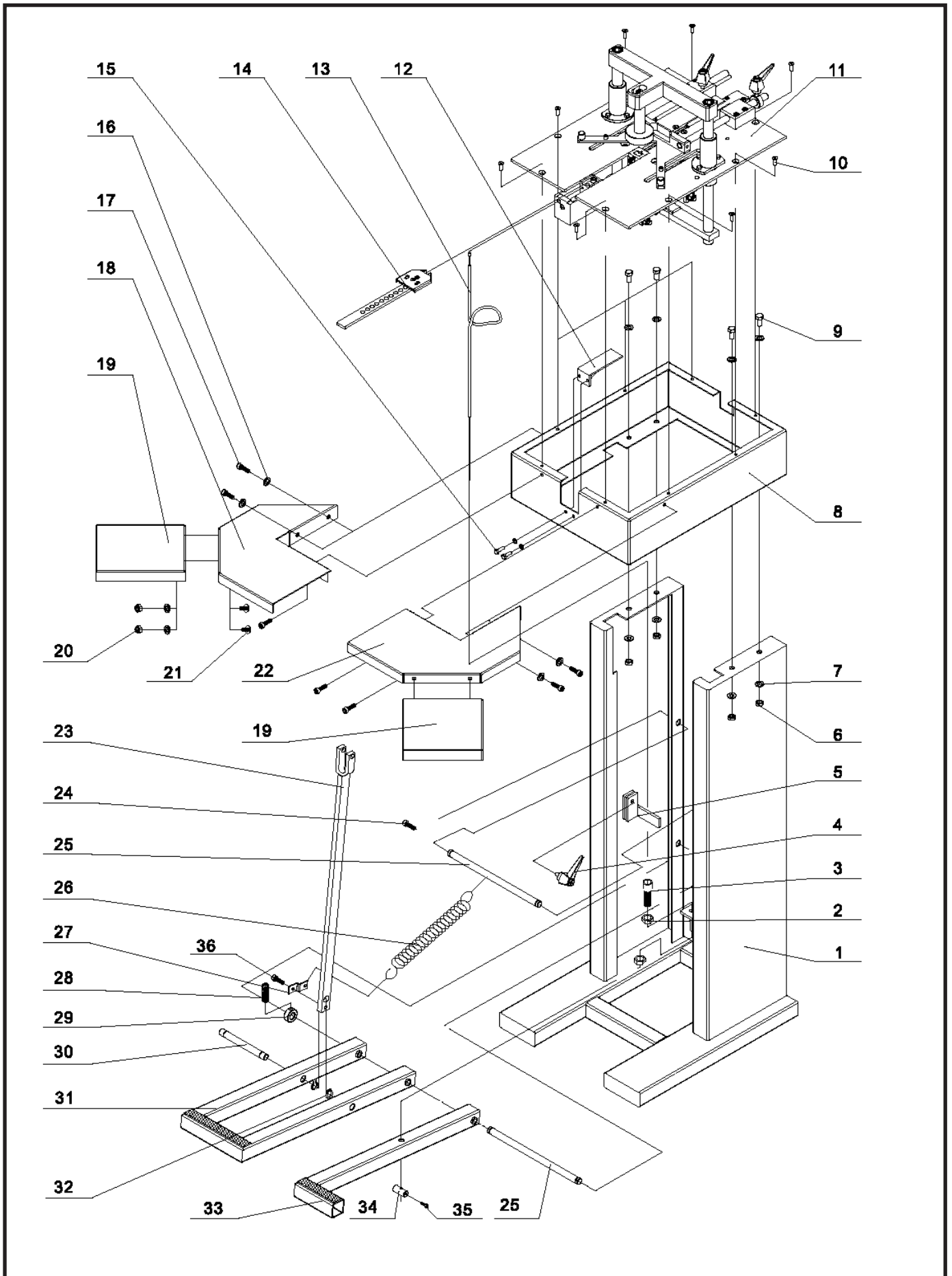
M3 Parts List No. 3 - Magazine

Part No.	Part Code	Part description
84	F1001	6 x M4 Socket Cap Head Screws
85	UP956	Nosepiece
86	UP948	Wedge Pusher
87	F1004	M5 Grubscrew
88	UP955	Cap
89	F1002	M4 Countersunk Screw
90	F1003	M4 Grub Screw
91	UP949	Spring Retainer
92	UP1457	Magazine Cord Spring
93	UP928	Wedge Support
94	UP1458	2 x Wedge Support Springs
95	UP1459	Wedge Support Steady Bar
96	UP1460	Wedge Platform Height Adjusting Screw
97	UP966	Magazine Cover Plate
98	F1002	2 x M4 Countersunk Screws
99	UP1461	Magazine Cord
100	UP954	Magazine Body
101	UP957	Driver Support
102	UP678	Driver
103	F1015	M6 Nut
104	UP1462	Wedge Platform Adjusting Knob

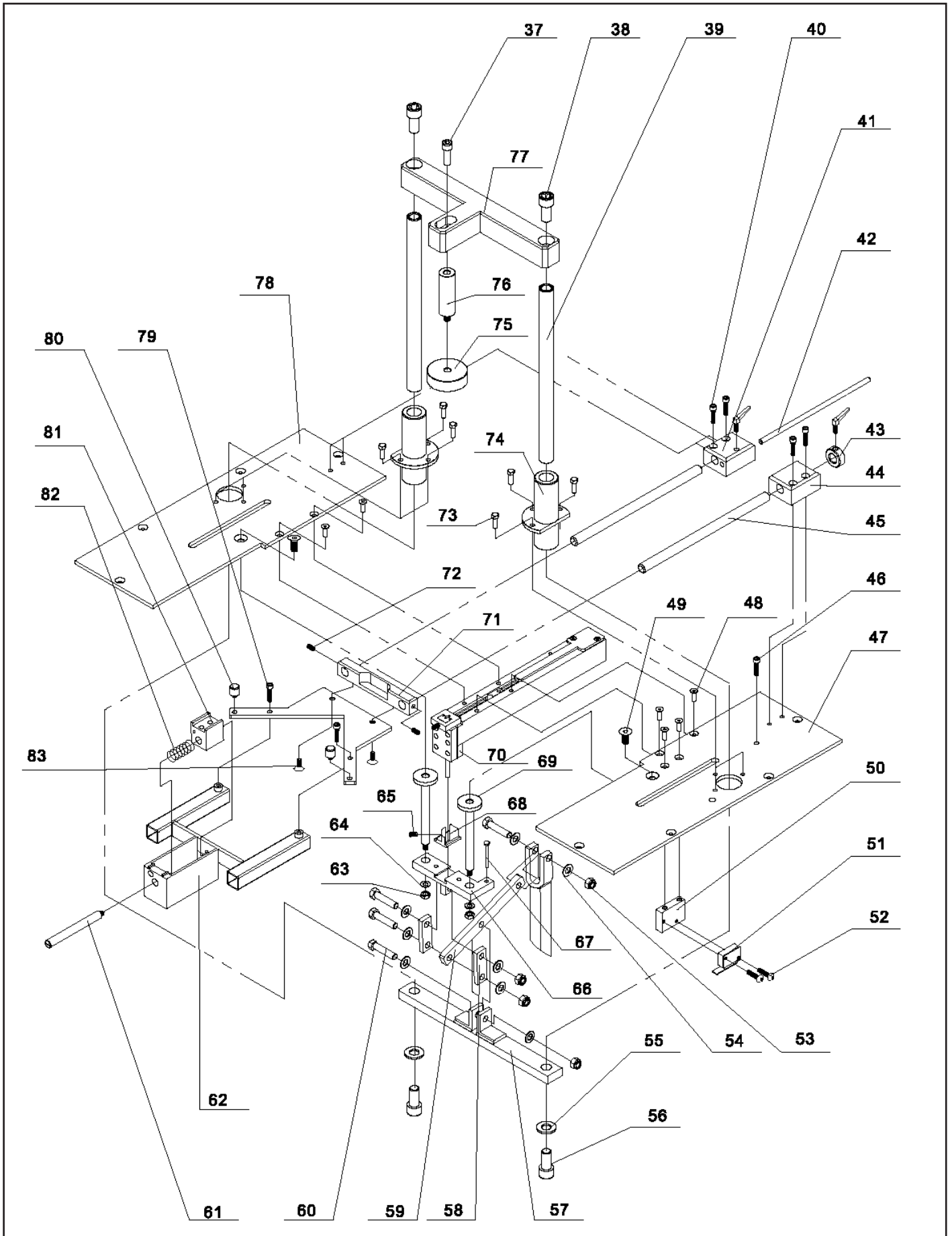
M3 Parts List No. 4 - Horizontal Clamp

Part No.	Part Code	Part Description
105	UP1130	Horizontal Clamp Bar
106	UP609	Jaw Pivot
107	F1013	M6 Socket Cap Head Screw
108	UP611	2 x Jaws
109	F1001	2 x M4 Socket Cap Head Screws
110	F1002	2 x M4 Countersunk Screws
111	UP608	Jaw Cover
112	UP610	Centre Piece for Jaw

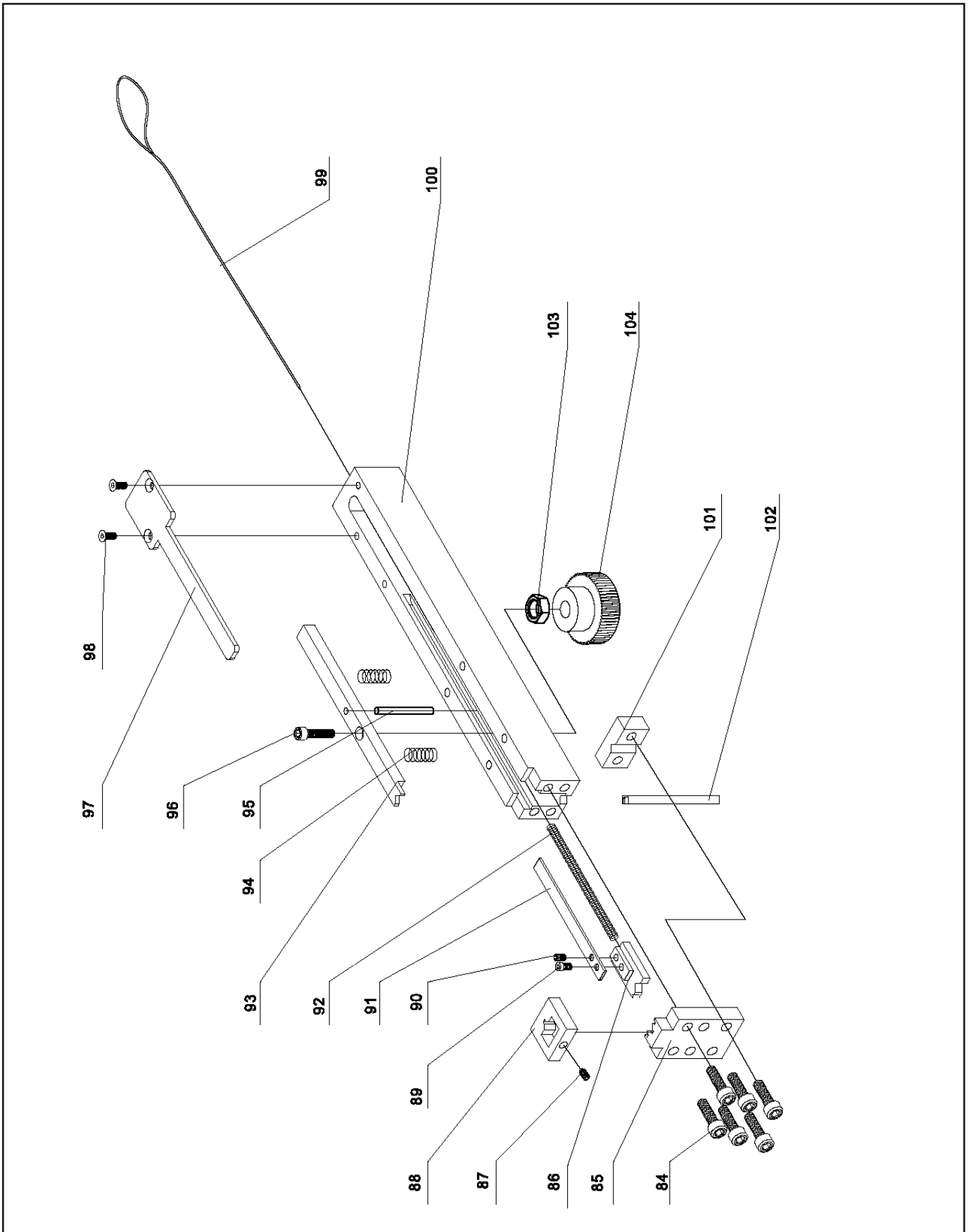
M3 Exploded View No.1 General Layout



M3 Exploded View No.2 Operating Head



M3 Exploded View No.3 Magazine



M3 Exploded View No.4 Horizontal Clamp

